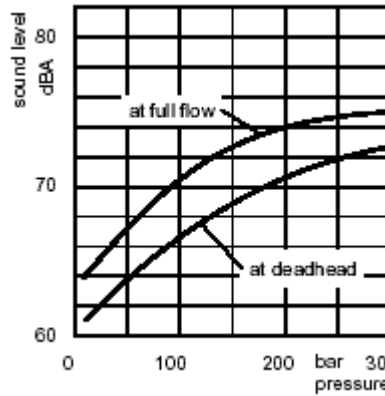


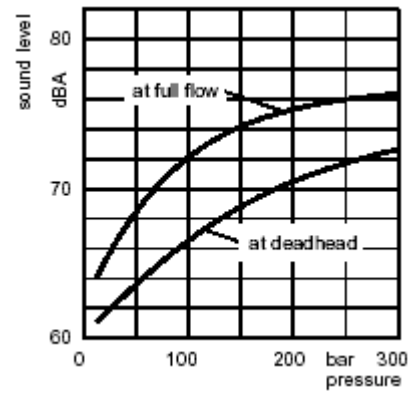
PV140-PV180



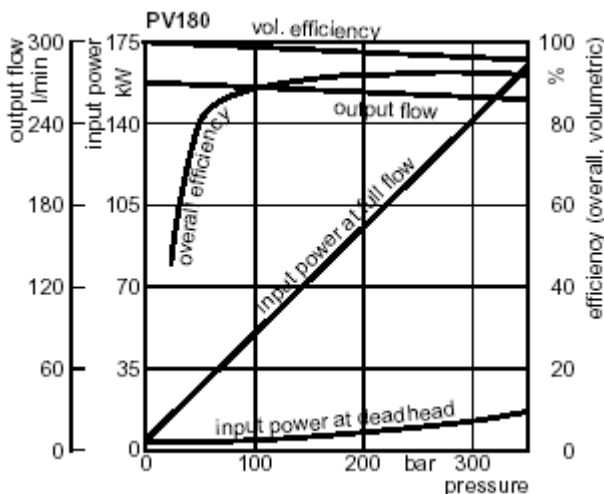
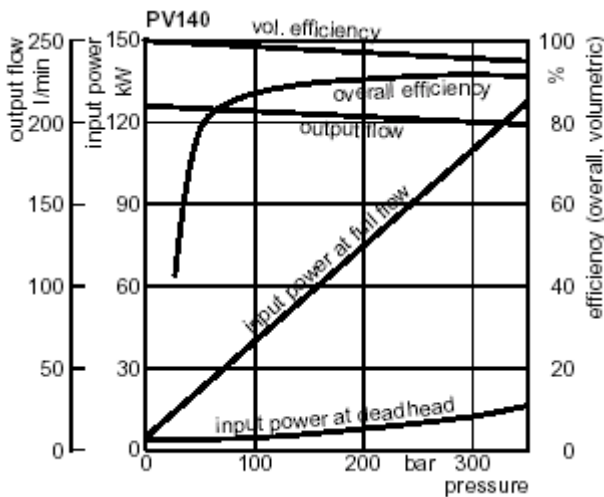
Noise Levels
PV140



Noise Levels
PV180



Efficiency, power consumption



Efficiency and case drain flows PV140, PV180

The efficiency and power graphs are measured at an input speed of $n=1500\text{min}^{-1}$, a temperature of 50°C and a fluid viscosity of $30\text{ mm}^2/\text{S}$.

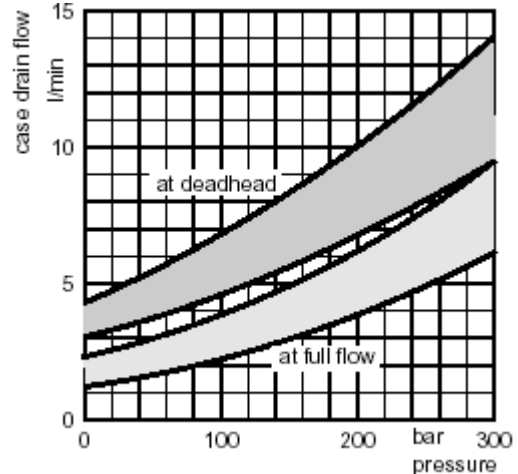
Case drain flow and compensator control flow leave via the drain port of the pump. To the values shown are to be added 1 to 1.2 l/min, if at pilot operated compensators (code G*, H* horse power compensator and p/Q-control) the control flow of the pressure pilot valve also goes through the pump.

Please note : The values shown below are only valid for Static operation. Under dynamic conditions and at rapid compensation of the pump the volume displaced by the servo piston also leaves the case drain port.

This dynamic control flow can reach up to 60 l/min!

Therefore the case drain line is to lead to the reservoir at full size and without restrictions as short and direct as possible.

Case drain flows PV140-PV180

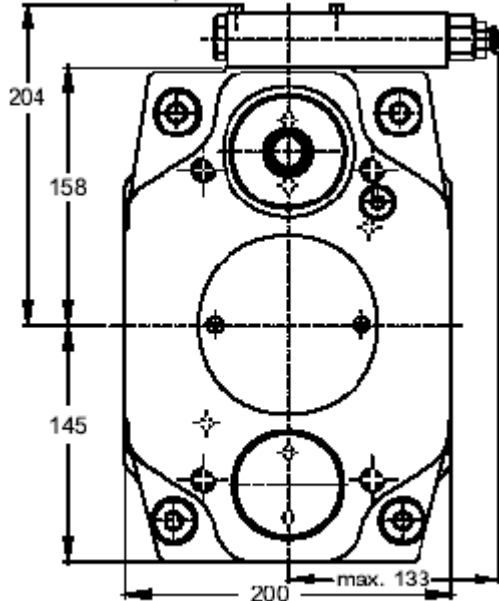


PV Axial Piston Pump



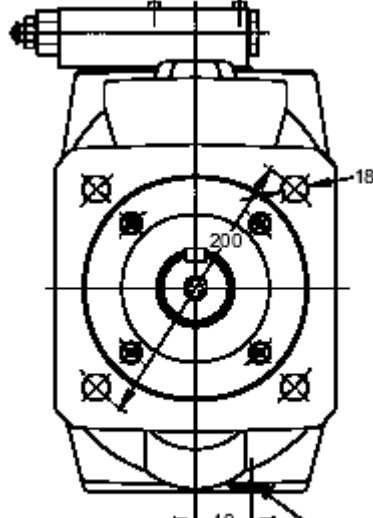
Dimensions

PV140 - 180, metric version

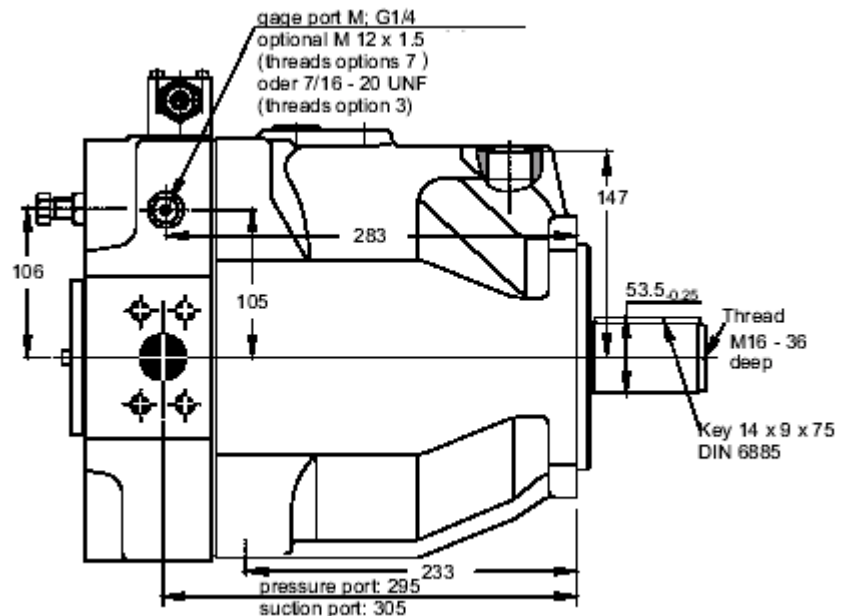
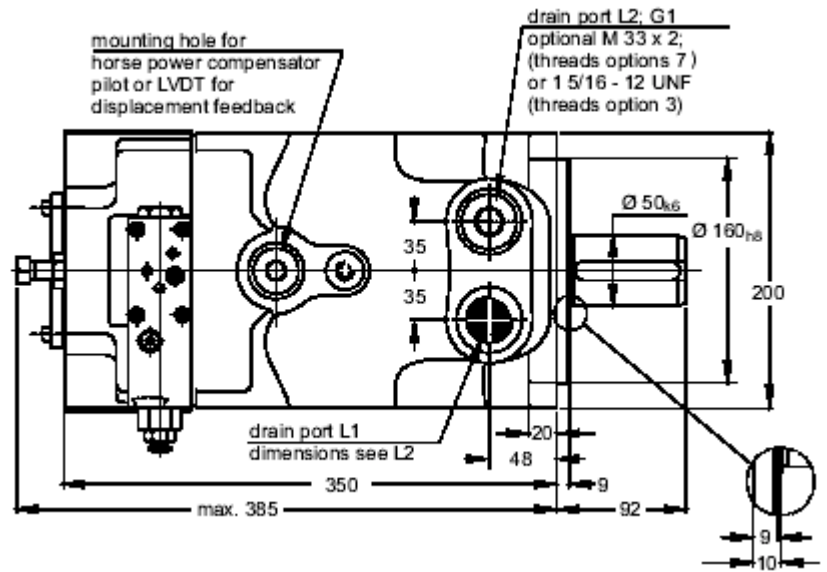


View X

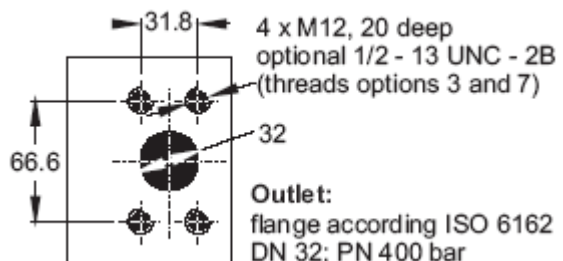
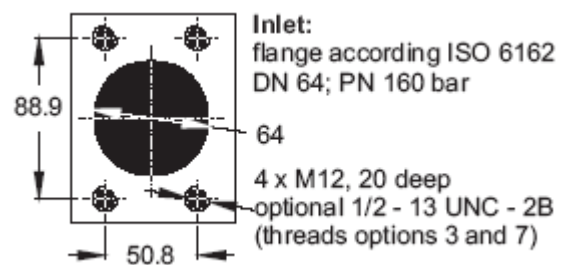
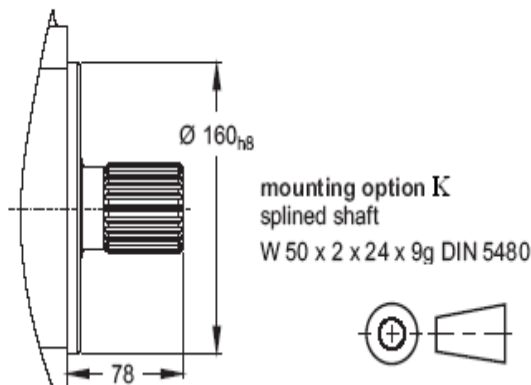
Shown with standard pressure compensator



flushing port L3: G 3/4
optional M 27 x 2 (threads options 7)
oder 1 1/16 - 12 UNF (threads option 3)



The pump shown above has mounting option M^A and thru drive option B (prepared for thru drive).

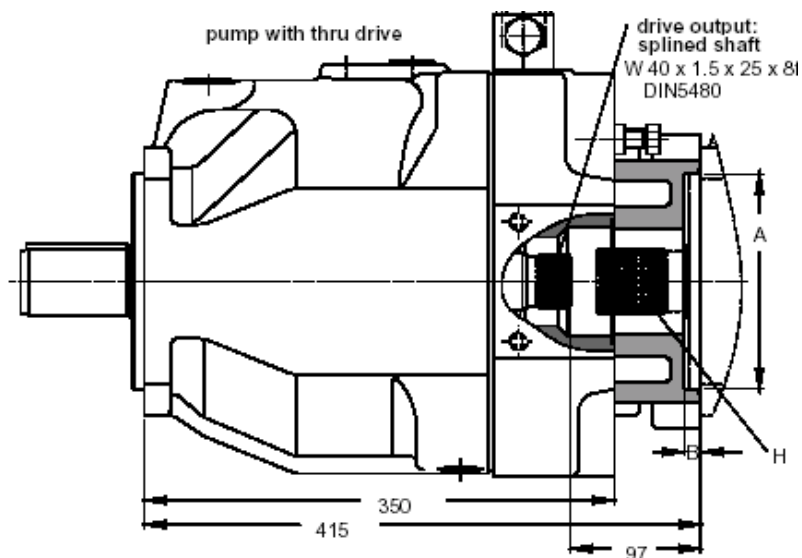
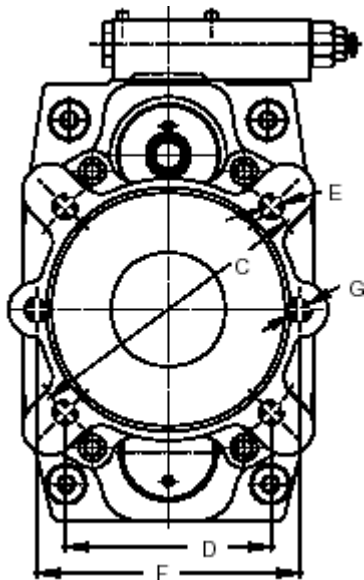
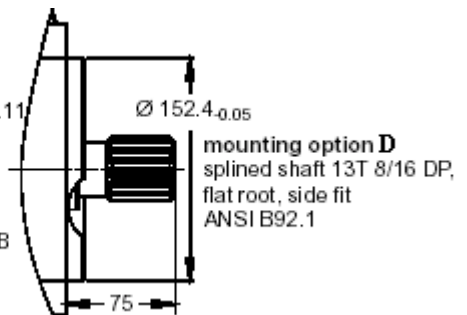
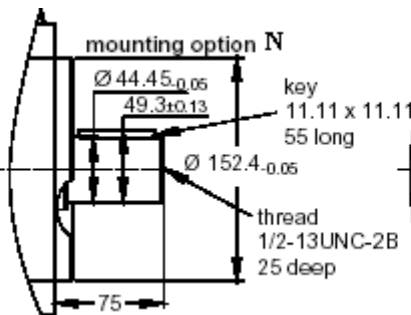
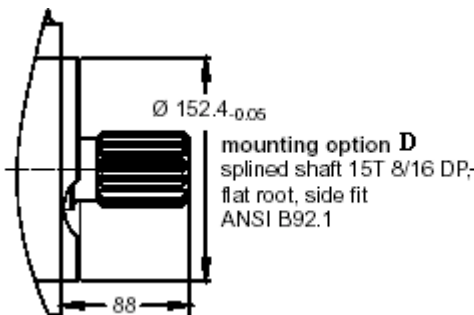
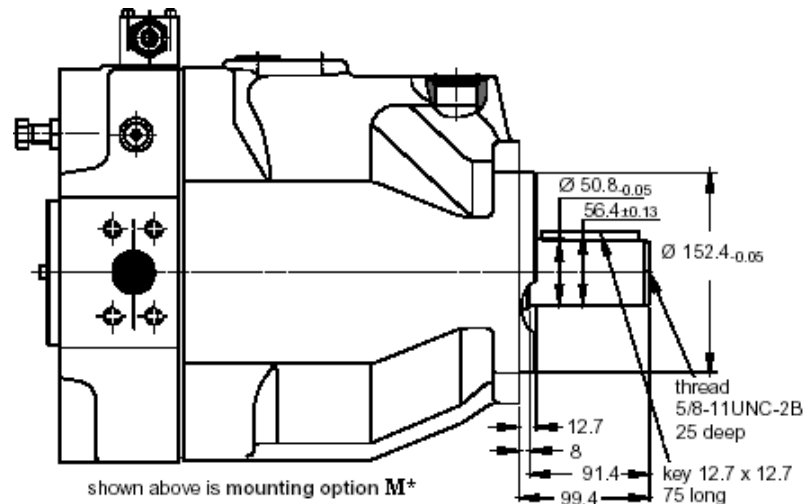
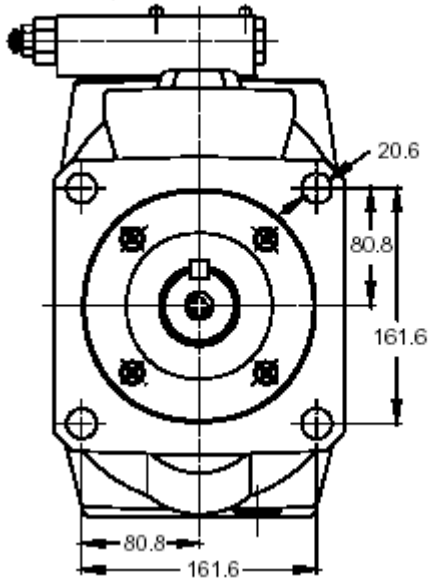


PV Axial Piston Pump



Dimensions

PV140 - 180, SAE version and thru drive version



Thru shaft adaptors are available with the following dimensions:						
A	B	C	D	E	F	G
80	10	103	-	M8	109	M10
100	12	125	-	M10	140	M12
125	12	160	-	M12	180	M16
160	12	200	-	M16	n. avail.	n. avail.
82.55	10	-	-	-	106	M10
101.6	12	-	89.8	M10	146	M12
127	14	-	114.5	M12	181	M16
152.4	14	-	161.6	M16	n. avail.	n. avail.

Dimension H and available couplings
At threads options 3 and 7 the dimensions E and G are UNC - 2B threads.

