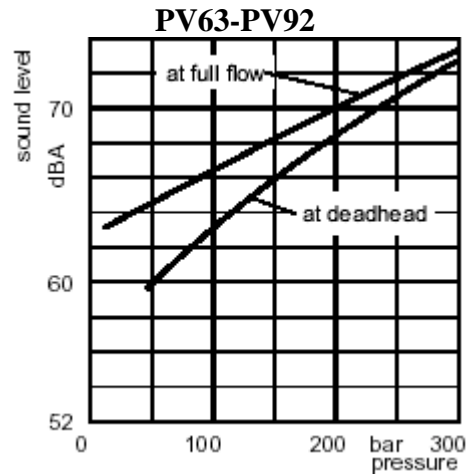


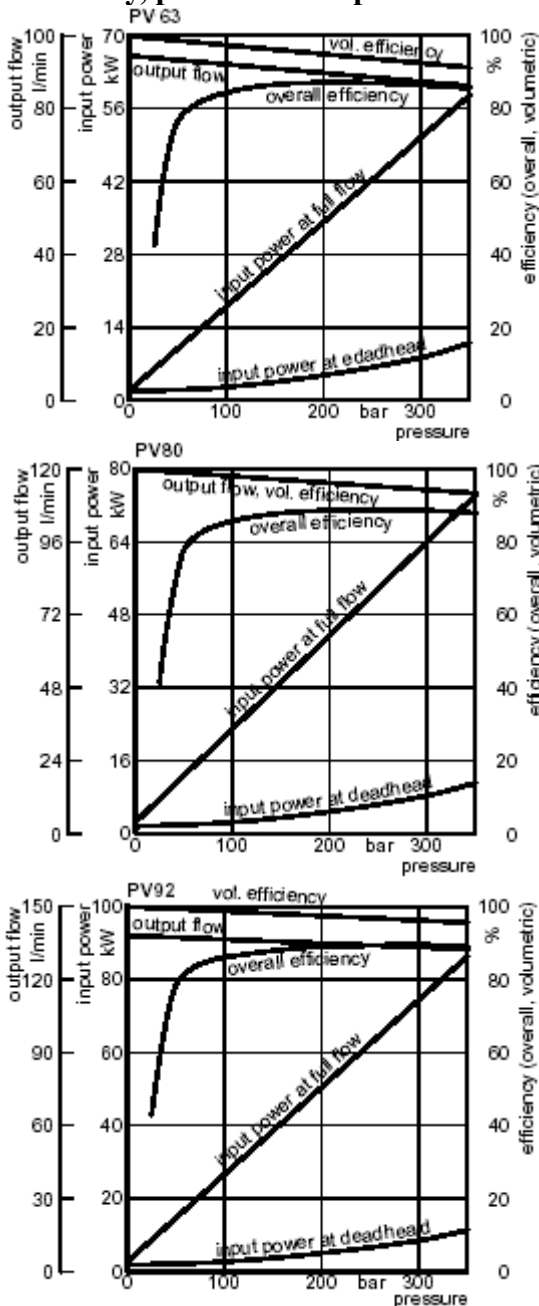
PV63-PV92



Noise Levels



Efficiency, power consumption



Efficiency and case drain flows

PV63, PV80, PV92

The efficiency and power graphs are measured at an input Speed of $n=1500\text{min}^{-1}$, a temperature of 50°C and a fluid Viscosity of $30\text{ mm}^2/\text{S}$.

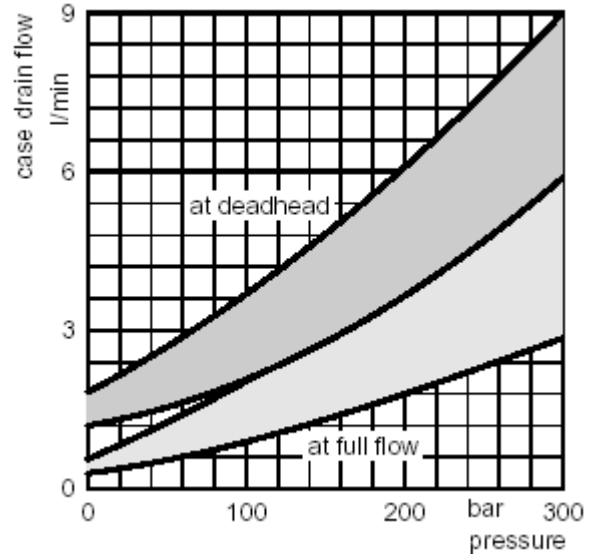
Case drain flow and compensator control flow leave via the drain port of the pump. To the values shown are to be added 1 to 1.2 l/min, if at pilot operated compensators (code G*, H* horse power compensator and p/Q-control) the control flow of the pressure pilot valve also goes through the pump. Please note : The values shown below are only valid for Static operation. Under dynamic conditions and at rapid compensation of the pump the volume displaced by the servo piston also leaves the case drain port.

This dynamic control flow can reach up to 60 l/min!

Therefore the case drain line is to lead to the reservoir at full size and without restrictions as short and direct as possible.

Case drain flows

PV63-PV92

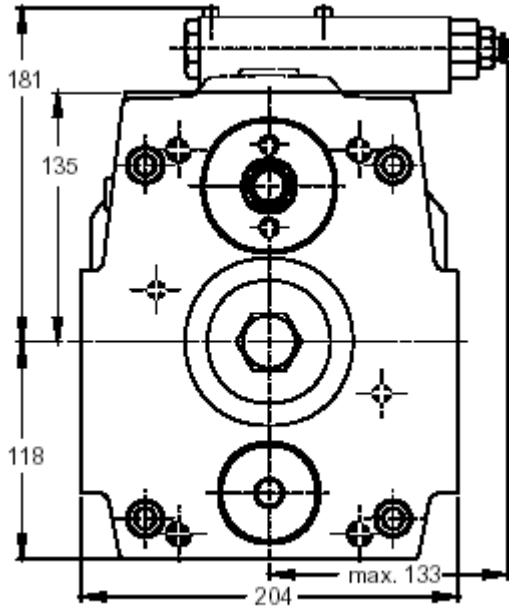


PV Axial Piston Pump



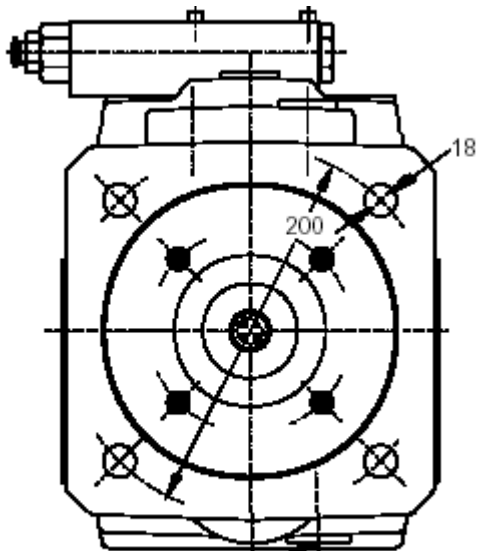
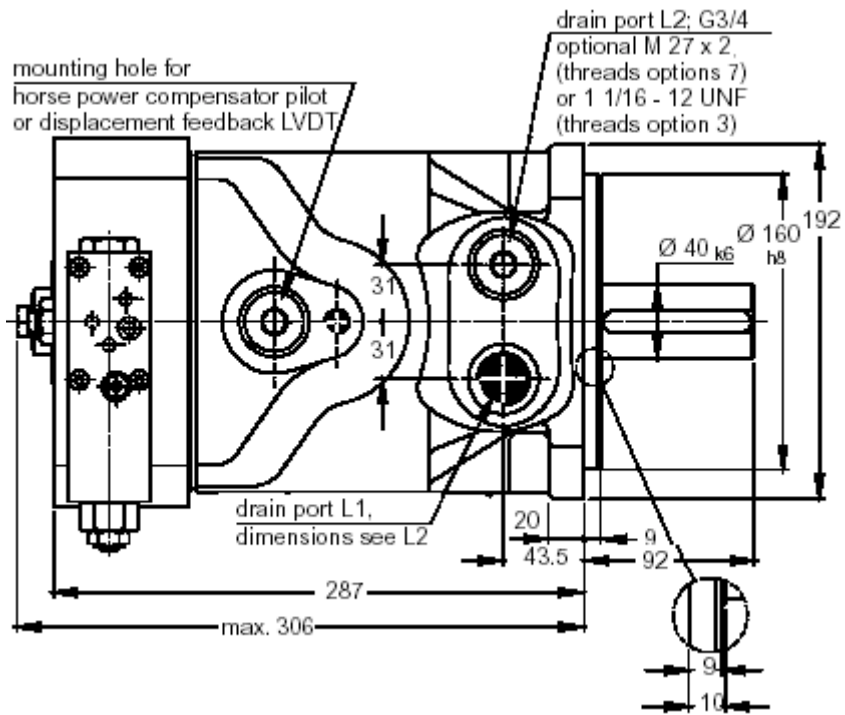
Dimensions

PV63-92, metric version

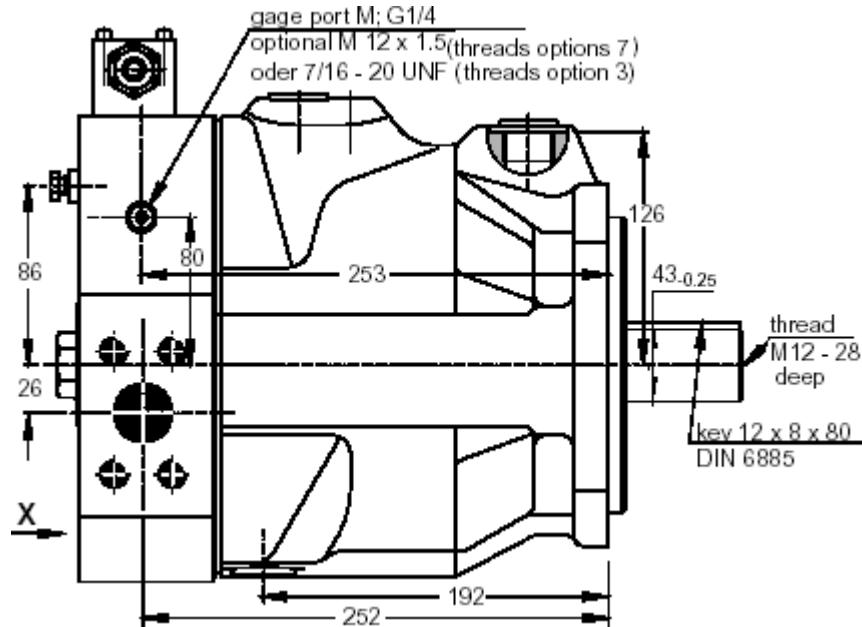


View X

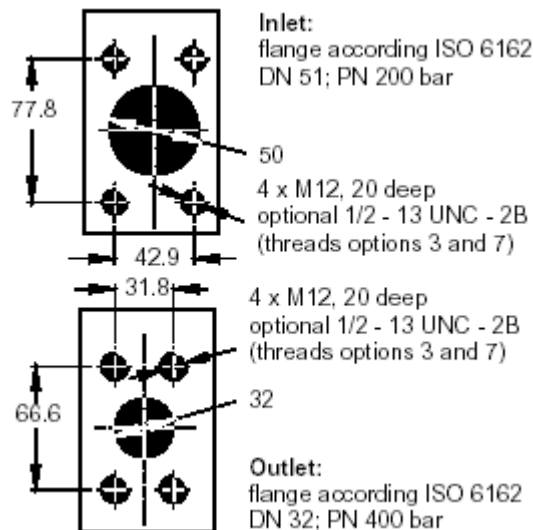
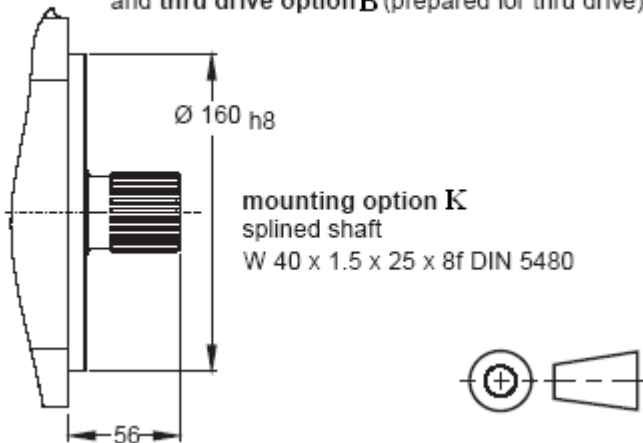
Shown with standard pressure compensator



flushing port L3: G 1/2
optional M 22 x 1.5 (threads options 7)
oder 7/8 - 14 UNF (threads option 3)



The pump shown above has mounting option M⁴ and thru drive option B (prepared for thru drive).

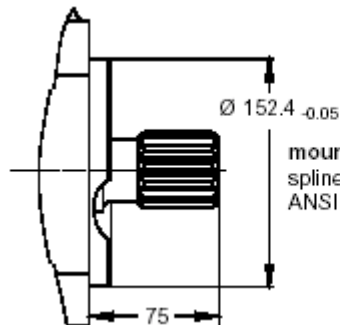
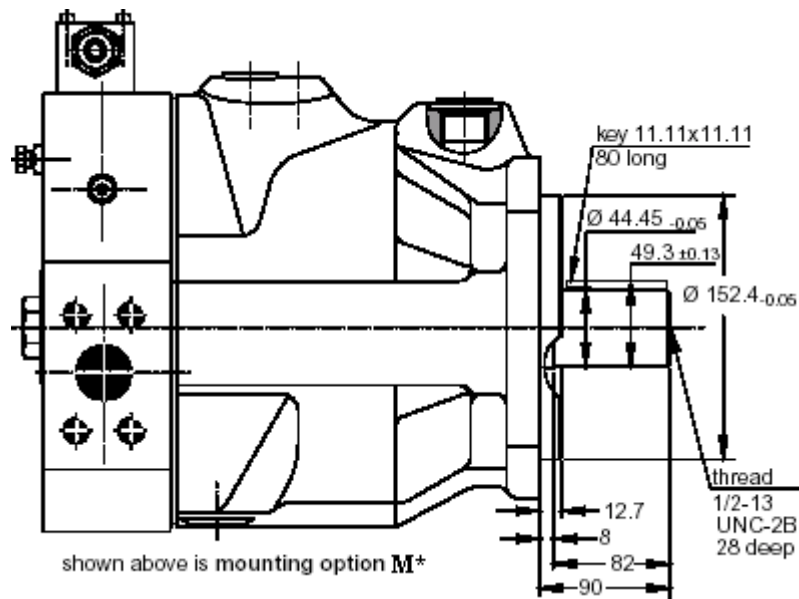
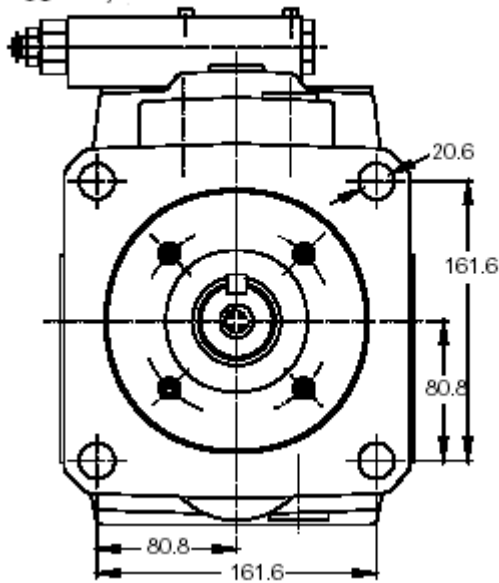


PV Axial Piston Pump

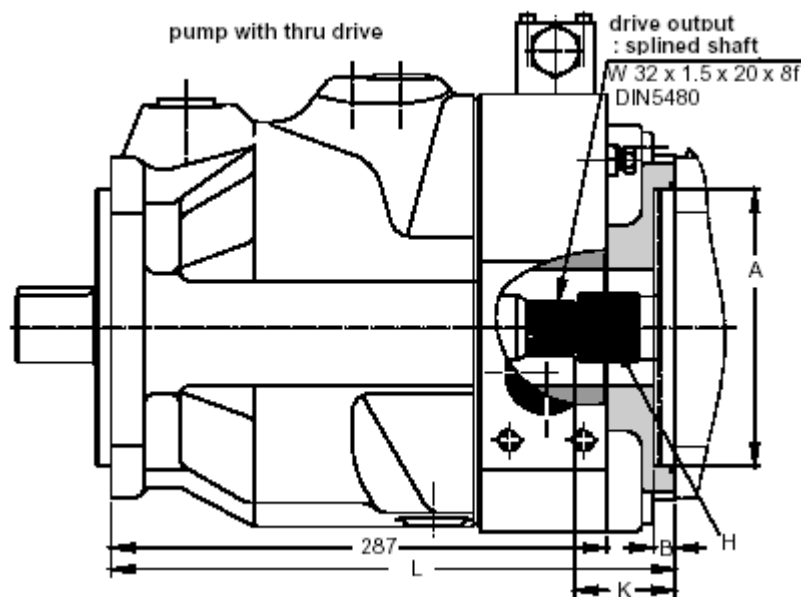
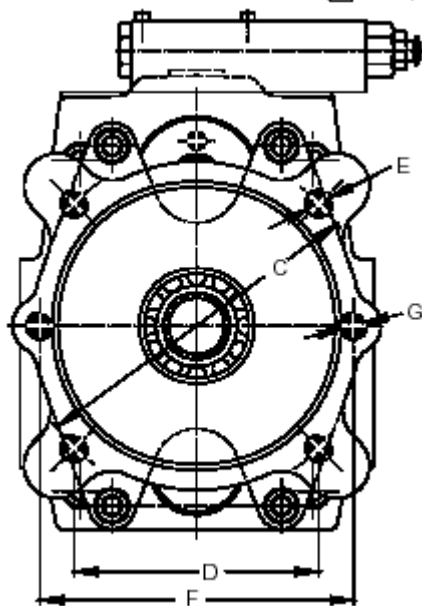


Dimensions

PV63-92, SAE version and thru drive version



mounting option D
splined shaft 13T 8/16 DP, flat root, side fit
ANSI B92.1



Thru shaft adaptors are available with the following dimensions:

| A | B | C | D | E | F | G | K | L |
|-------|----|-----|-------|-----|-----------|-----------|----|-----|
| 63 | 10 | 85 | - | M8 | 100 | M8 | 58 | 326 |
| 80 | 10 | 103 | - | M8 | 109 | M10 | 58 | 326 |
| 100 | 12 | 125 | - | M10 | 140 | M12 | 58 | 326 |
| 125 | 12 | 160 | - | M12 | 180 | M16 | 58 | 326 |
| 160 | 12 | 200 | - | M16 | n. avail. | n. avail. | 58 | 326 |
| 82.55 | 10 | - | - | - | 106 | M10 | 58 | 326 |
| 101.6 | 12 | - | 89.8 | M10 | 146 | M12 | 58 | 326 |
| 127 | 14 | - | 114.5 | M12 | 181 | M16 | 58 | 326 |
| 152.4 | 14 | - | 161.6 | M16 | n. avail. | n. avail. | 78 | 346 |

Dimension H and available couplings
At threads options 3 and 7 the dimensions E and G are UNC - 2B threads.

